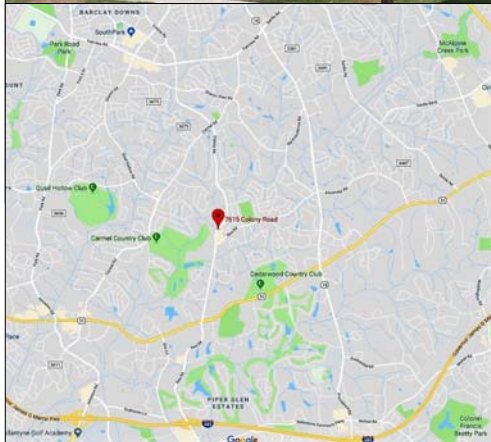
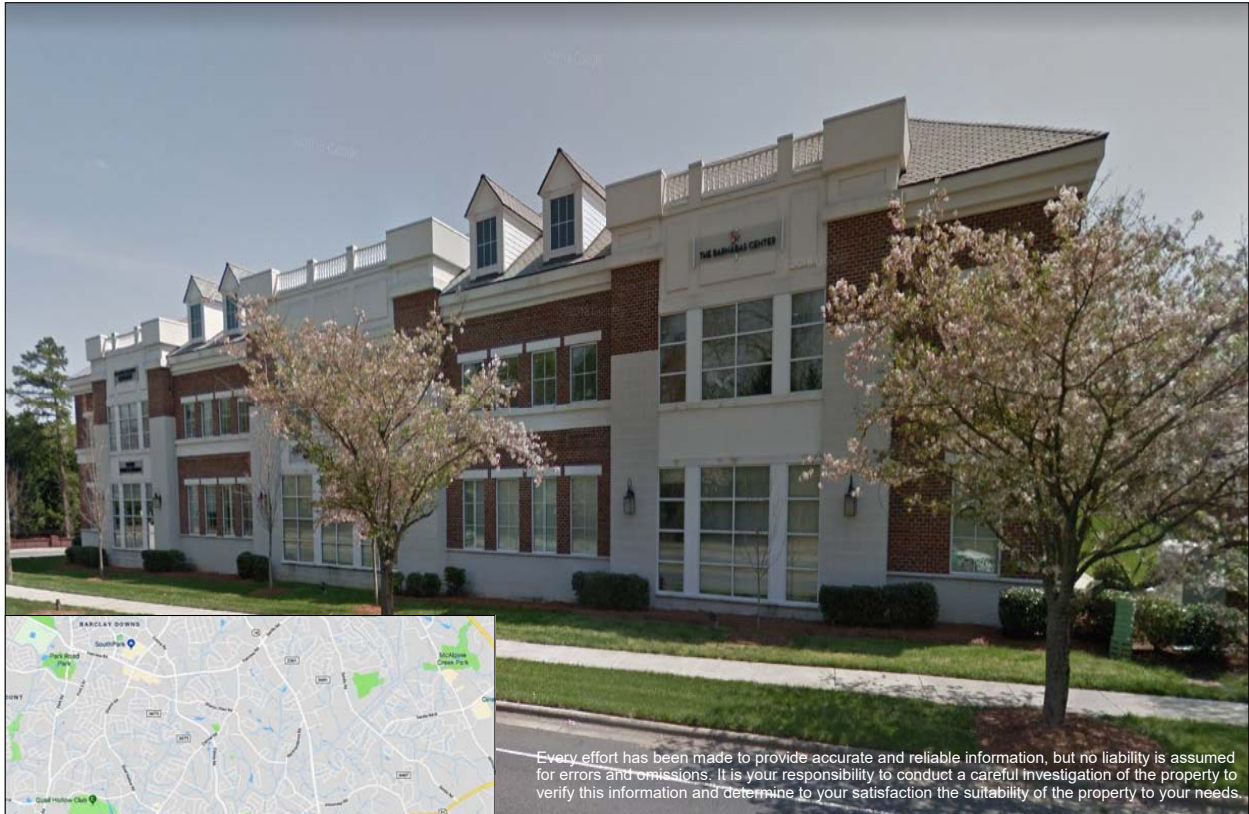


7615 Colony Road, Suite 215B

+/- 1,532 SF : Office for LEASE
1st Generation Space at Colony Road Professional Center



Every effort has been made to provide accurate and reliable information, but no liability is assumed for errors and omissions. It is your responsibility to conduct a careful investigation of the property to verify this information and determine to your satisfaction the suitability of the property to your needs.

- Office, conference room, open area, reception, kitchenette

- First generation space

- Great location, good visibility at the Corner of Colony Road and Rea Road

- Excellent parking ratio of 4/1000

- Great amenities in adjacent shopping center, coffee shop, restaurants, and ups store

Chris Wannamaker, Broker
704-373-1181
cwannamaker@providencecommercial.com

Clay Durkin, Broker
704-373-2114
cdurkin@providencecommercial.com



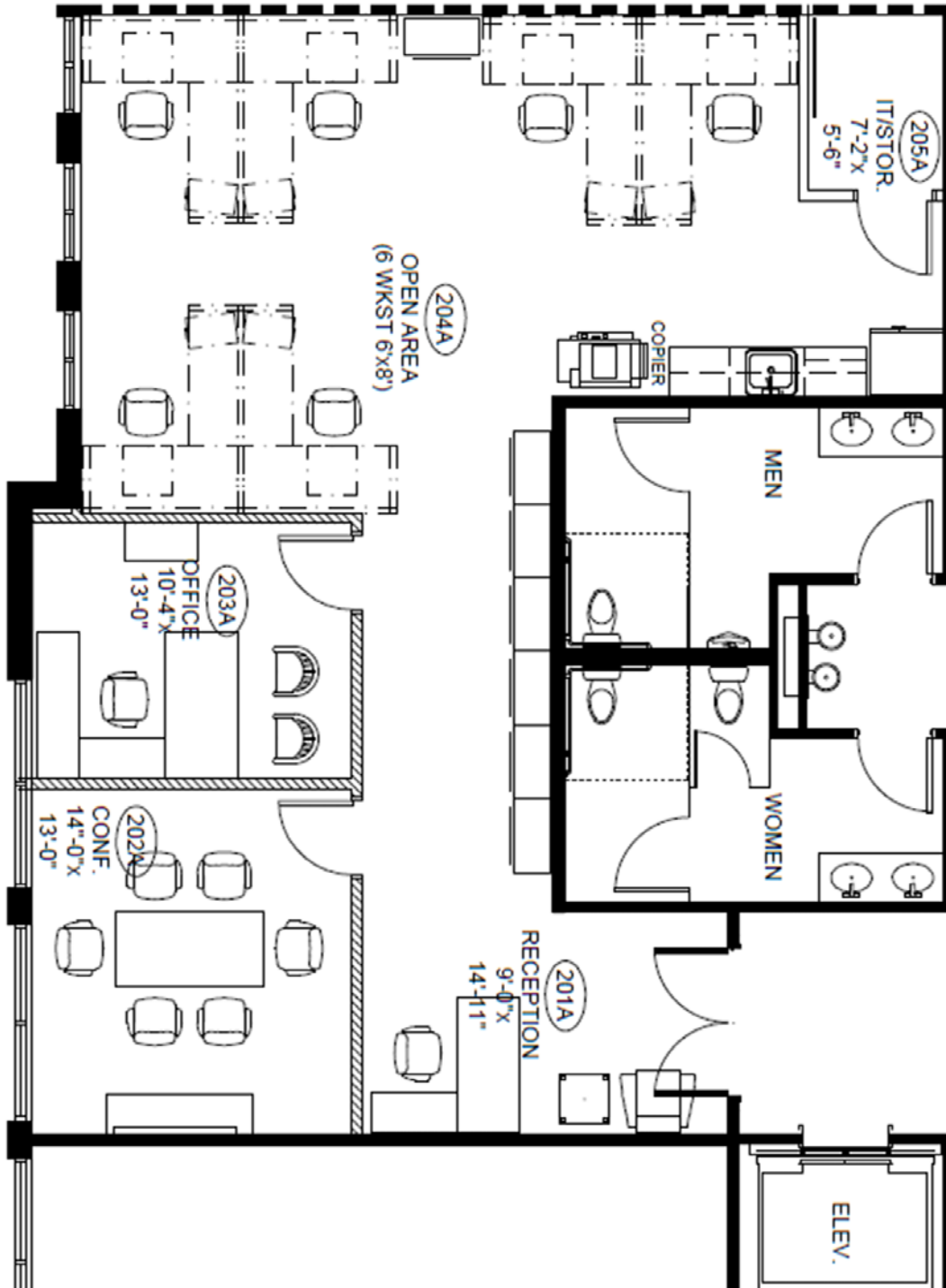
Providence Commercial Real Estate Advisors, LLC | 1307 West Morehead St., Suite 107 | Charlotte, North Carolina 28208

For more info., go to "Featured Properties" at www.ProvidenceCommercial.com

7615 Colony Road, Suite 215B

+/- 1,532 SF : Office for LEASE

1st Generation Space at Colony Road Professional Center



Providence Commercial Real Estate Advisors, LLC | 1307 West Morehead St., Suite 107 | Charlotte, North Carolina 28208

For more info., go to "Featured Properties" at www.ProvidenceCommercial.com